

# **Navigating with a Compass and Topographic Map**

CACC Training Aid 8-T-5  
Last Modified 17DEC04

---

---

---

---

---

---

---

---

**Begin by laying your laminated topographic map on a flat, non-metallic surface that does not interfere with your magnetic needle of your compass.**

---

---

---

---

---

---

---

---



---

---

---

---

---

---

---

---

**Identify your location on the map and make a mark at that spot with an erasable marker.**

---

---

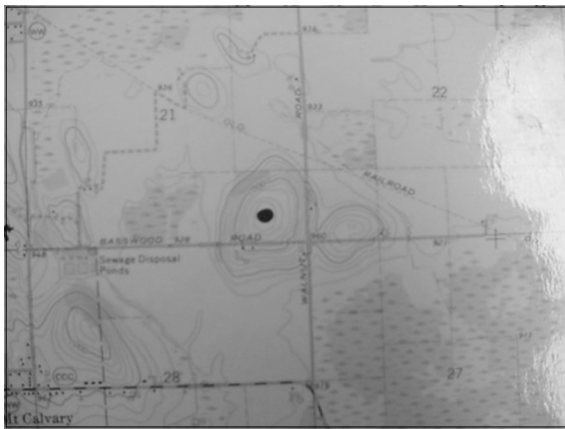
---

---

---

---

---



---

---

---

---

---

---

---

**Identify the location you would like to travel to on the map and make a mark at that spot with an erasable marker.**

---

---

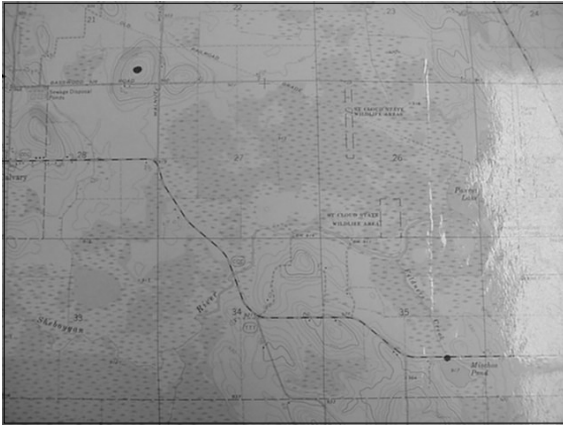
---

---

---

---

---



---

---

---

---

---

---

---

---

**Use a straight edge to connect the two points. Extend the line beyond each point, and place an arrow in the direction of travel.**

---

---

---

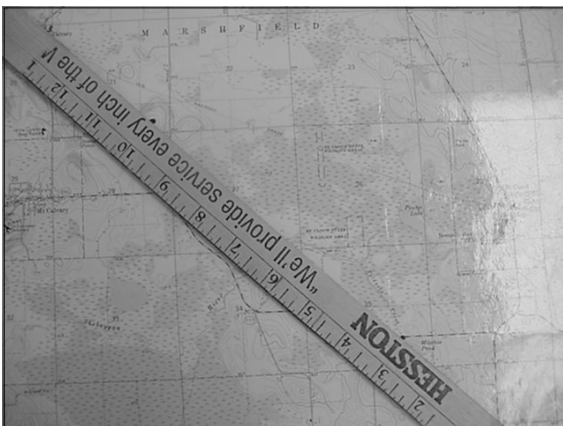
---

---

---

---

---



---

---

---

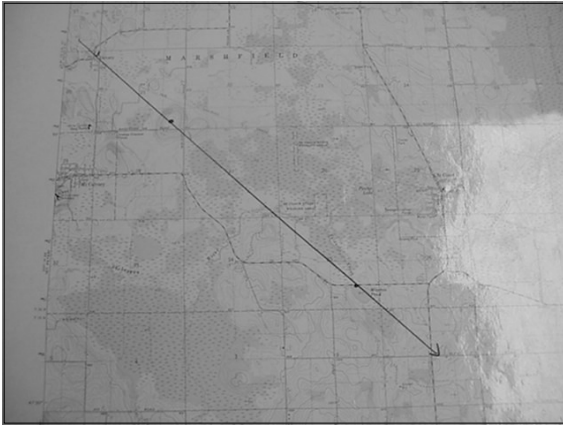
---

---

---

---

---



---

---

---

---

---

---

---

---

**Locate any point on that line that intersects with an orienting line (red) on your map.**

---

---

---

---

---

---

---

---



---

---

---

---

---

---

---

---

**Place your compass on the map so that the center of the magnetic needle is directly over the intersection of your line and the orienting line.**

---

---

---

---

---

---

---

**At the same time, position the compass so your marker line and direction of travel line are over the line drawn on map.**

---

---

---

---

---

---

---

**Also, spin the bezel dial so the orienting lines are parallel to the orienting line(s) on the map.**

---

---

---

---

---

---

---



---

---

---

---

---

---

---

---

**TURN THE MAP (and compass) so that the north end of the magnetic needle is inside the orientating arrow of the compass.**

---

---

---

---

---

---

---

---



---

---

---

---

---

---

---

---

**Make sure the direction of travel line is still directly above the line that you drew on the map.**

---

---

---

---

---

---

---



---

---

---

---

---

---

---

**Read your compass and determine the degree on the dial that is intersected by the marker line.**

---

---

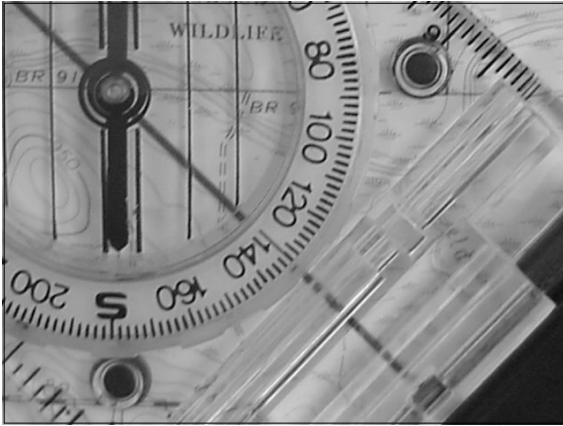
---

---

---

---

---



---

---

---

---

---

---

---

**Using that bearing, find an object in the distance that is in that bearing. Walk to that object.**

---

---

---

---

---

---

---

**When you reach this object, find another object in the distance at that bearing. Walk to it.**

---

---

---

---

---

---

---



**Continue repeating this procedure until you reach your destination.**

---

---

---

---

---

---

---

---